

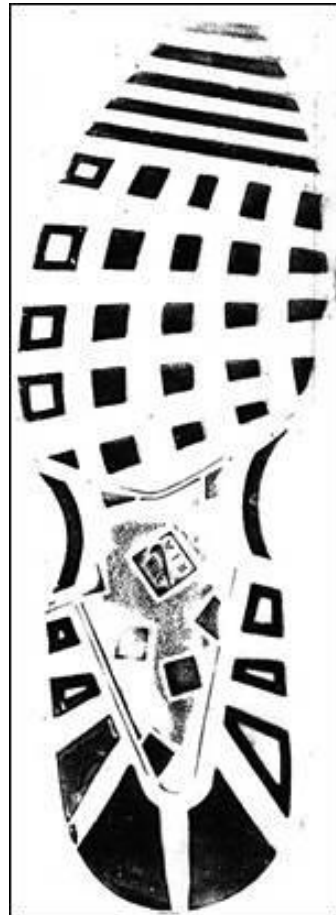
Name: _____

Shoe Prints

Adapted from Casts project 10 in *Detective Science* by Jim Wiese

Footprints, shoe prints, and tire tracks found at the scene of a crime can be important evidence to connect a suspect with a crime. When a shoe makes an impression in soft material, such as soil, it leaves behind a negative mold of itself, including any special marks or imperfections. Signs of wear or a manufacturing detail, such as a logo or tread pattern, may be visible.

Examine the shoe prints below and circle the following: signs of wear, the logo and anything unique about the tread pattern.

**A****B**